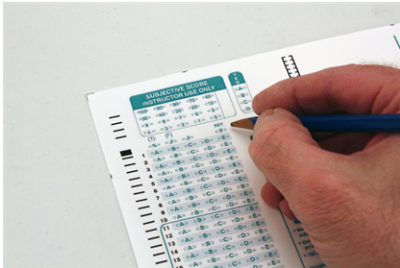


## Marking the Key with Test Scoring Options



To mark a form as a key, make marks in the key marking row (found immediately above question 1).



### To error mark and print raw score (required):

Mark key bubble 5.



### To print correct answers (alphabetic) and raw score:

Mark bubbles 2 and 5.



### To print correct answers (numeric) and raw score:

Mark bubbles 2, 3, and 5.



### To add the percent correct:

Mark the % bubble in combination with other marks as shown above.



### To score side 2:

Mark bubble 5 ONLY in the key marking row of side two. Your scoring options will carry over to side two.